

Contactless Angle Sensor

CP-2HA Series

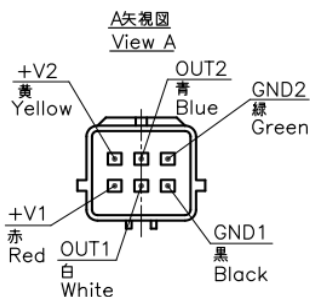
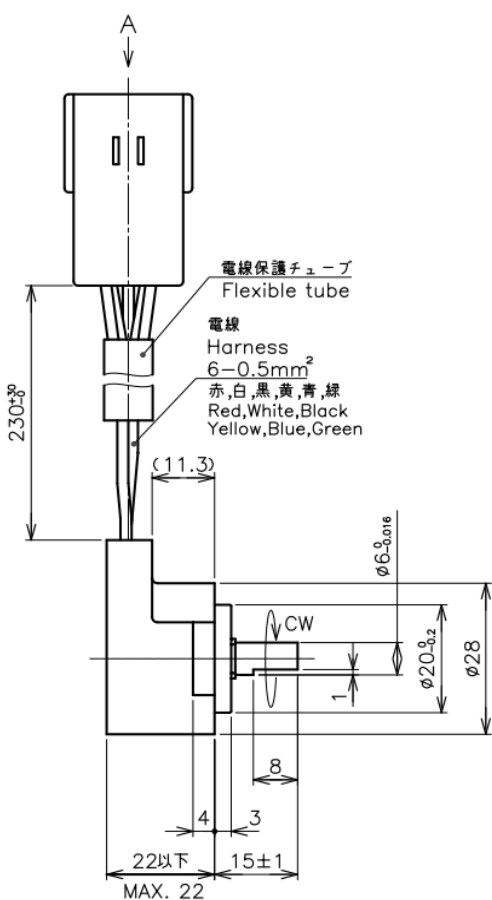


- Contactless Hall-IC Angle Sensor
- Electrical Angle : 350° (Option: 270° , 300° , 359°)
- Absolute Linearity : ±1%FS (Independent Linearity ±0.5%FS)

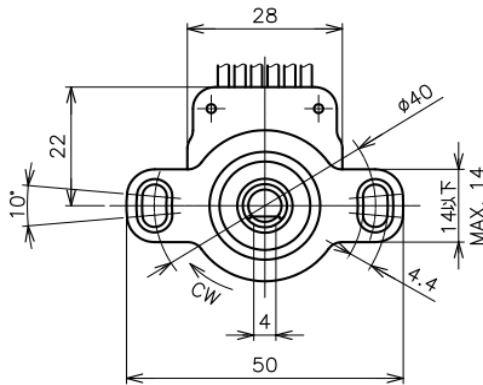
【Material】

- Housing : PBT
- Shaft : Stainless Steel
- Bearing : Copper alloy

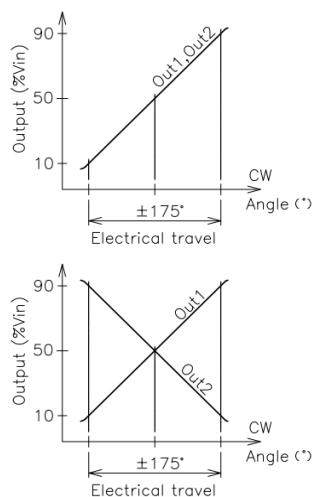
Dimension [mm]



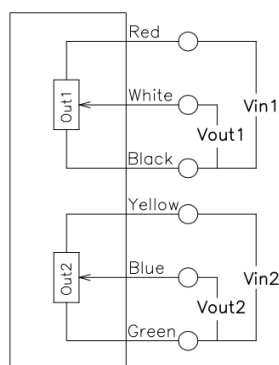
シャフトが本図位置にある時
出力は約50%になる。
When shaft is positioned as shown,
output is at approx.50%



Output Characteristics

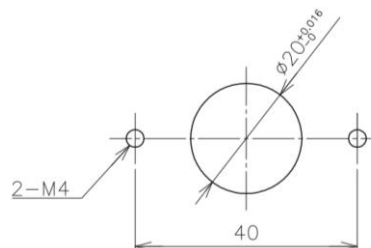


Schematic



• Red,White,Black,Yellow,Blue,Green indicate harness colors.

Mounting



Model No.

CP-2HA

Electrical Specifications

Effective Electrical Travel	350 (Option: 270, 300, 359)	°
Output Range	10~90	%Vin
Absolute Linearity	±1 (Independent Linearity : ±0.5%)	FS=350° %FS
Input Voltage	DC5±0.5	V
Load Resistance	MIN. 10	kΩ
Supply Current	MAX. 32 (Single Output : MAX.16)	mA
Insulation Resistance	MIN. 100/DC50V	MΩ
Output Resoliton	12 (0~100%Vin)	bit
Hysteresis	MAX. 0.2	%FS
Temp. Characteristics -40~125°C (Reference Temp.25°C)	±2.45	°
2 Output Difference (Parallel Output)	±2	%FS

Mechanical Specifications

Total Mechanical Travel	360	°
Torque	180	mN·m
Thrust Load Tolerance	3	N
Radial Load Tolerance	4	N
Mass	Approx. 40	g

Environmental Specifications

Life Cycles	MAX. 10 Million	Cycle
Category Temperature Range	-20~+100	°C
Storage Temperature Range	-20~+100	°C
Vibration	110.7m/s ² 18~2000Hz(6min). 3axis 8hours	
Shock	294m/s ² 11ms 3axis 3times	
EMS	100V/m 200MHz ~1GHz	
ESD (Case to Each Terminal)	±6(IEC61000-4-2)	kV
ESD (Between Each Terminal)	±6(IEC61000-4-2)	kV
IP Level	IP65	

Options

- W/O AMP connector
- Single Output (3 wires)
- Phase Output

Handling Instruction

- Do not use Hall-IC sensor as a variable resistor
- This product may be influenced from external magnetic field.
- Use this sensor in the place where is protected from ESD.